

# U.S. Drought Monitor

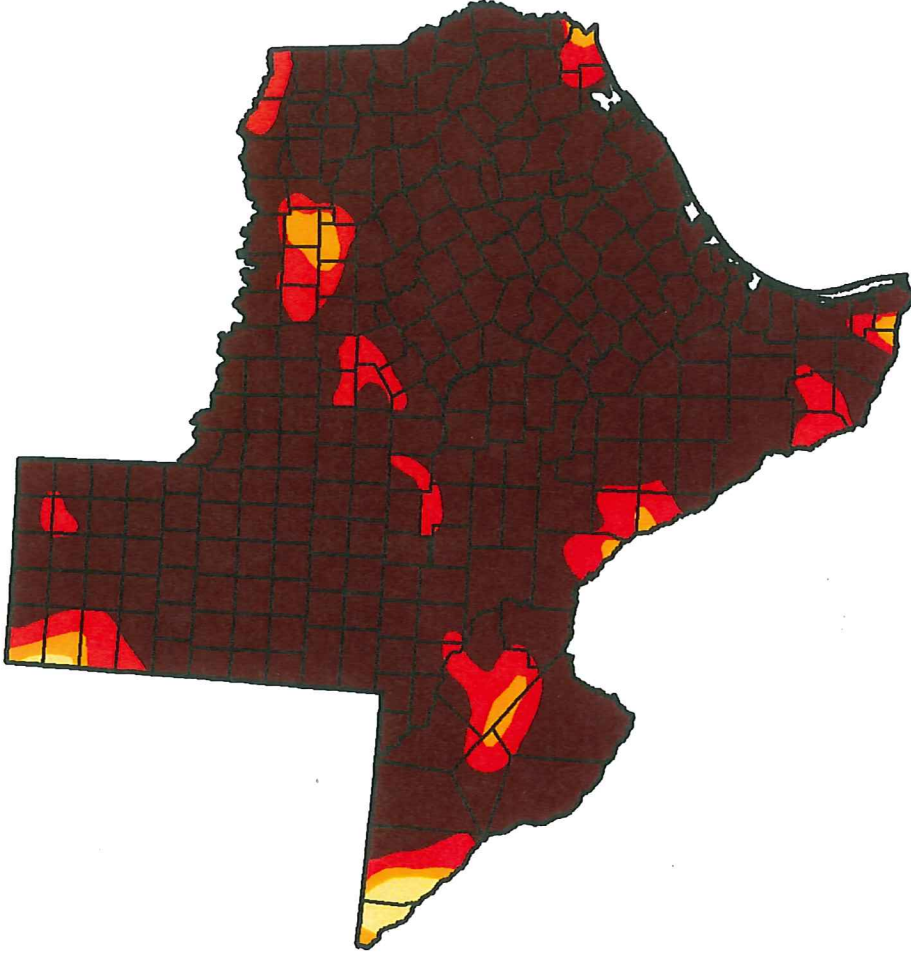
October 4, 2011  
Valid 7 a.m. EST

## Texas

Drought Conditions (Percent Area)						
	None	D0-D4	D1-D4	D2-D4	D3-D4	D4
Current	0.00	100.00	100.00	99.16	96.99	87.98
Last Week (09/27/2011 map)	0.00	100.00	100.00	99.16	96.65	85.75
3 Months Ago (07/05/2011 map)	2.41	97.59	95.73	94.39	90.21	71.30
Start of Calendar Year (12/28/2010 map)	7.89	92.11	69.43	37.46	9.59	0.00
Start of Water Year (09/27/2011 map)	0.00	100.00	100.00	99.16	96.65	85.75
One Year Ago (09/28/2010 map)	75.57	24.43	2.43	0.99	0.00	0.00

### Intensity:

- D0 Abnormally Dry
- D1 Drought - Moderate
- D2 Drought - Severe
- D3 Drought - Extreme
- D4 Drought - Exceptional



The Drought Monitor focuses on broad-scale conditions. Local conditions may vary. See accompanying text summary for forecast statements.



Released Thursday, October 6, 2011  
Rich Tinker, Climate Prediction Center/NOAA

<http://droughtmonitor.unl.edu>

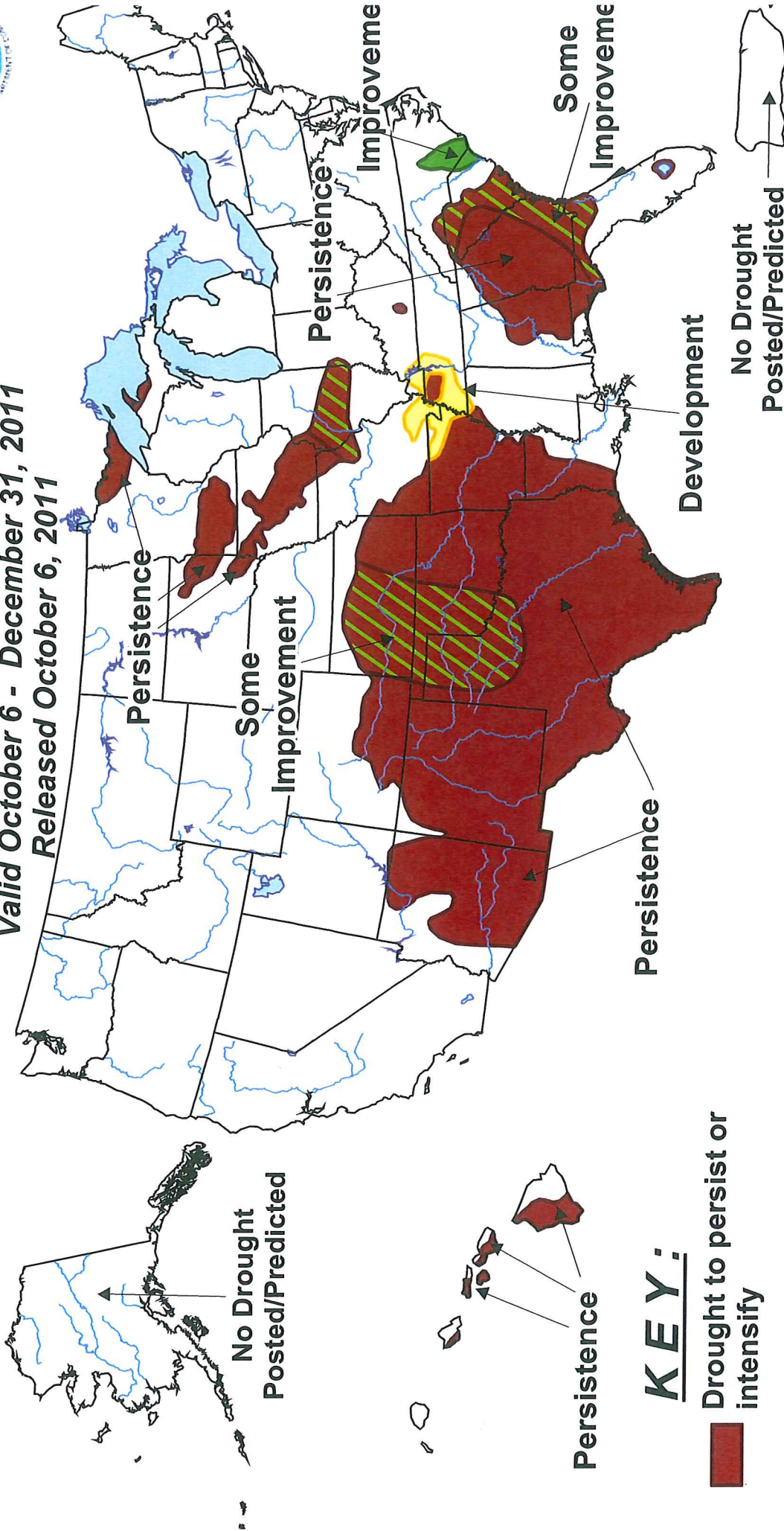


# U.S. Seasonal Drought Outlook

## Drought Tendency During the Valid Period

### Valid October 6 - December 31, 2011

### Released October 6, 2011



### KEY:

Drought to persist or intensify

Drought ongoing, some improvement

Drought likely to improve, impacts ease

Drought development likely

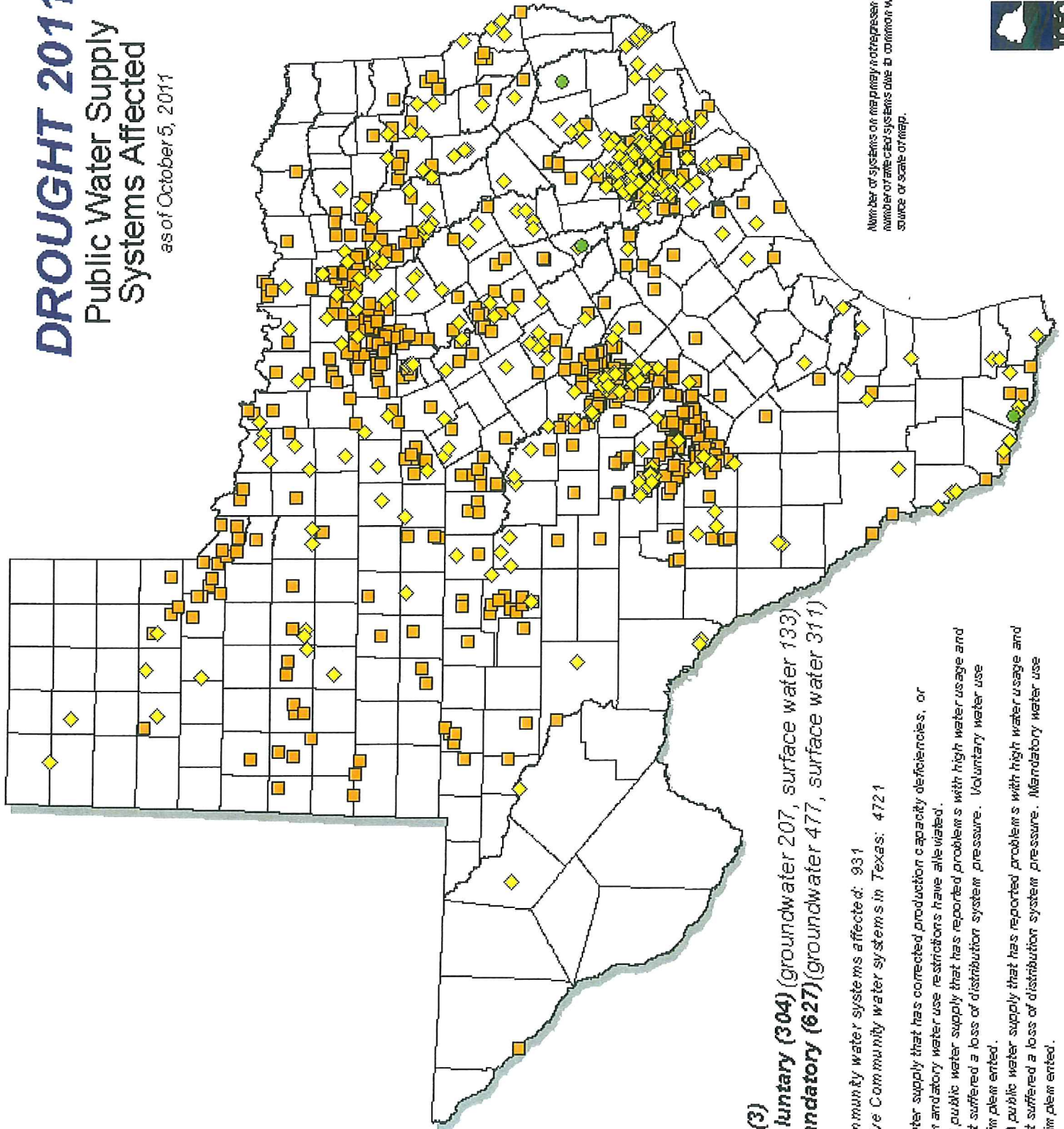
Depicts large-scale trends based on subjectively derived probabilities guided by short- and long-range statistical and dynamical forecasts. Short-term events -- such as individual storms -- cannot be accurately forecast more than a few days in advance. Use caution for applications -- such as crops -- that can be affected by such events. "Ongoing" drought areas are approximated from the Drought Monitor (D1 to D4 intensity). For weekly drought updates, see the latest U.S. Drought Monitor. NOTE: the green improvement areas imply at least a 1-category improvement in the Drought Monitor intensity levels, but do not necessarily imply drought elimination.



# DROUGHT 2011

## Public Water Supply Systems Affected

as of October 5, 2011



- **RESOLVED (3)**
- ◆ **WATCH - Voluntary (304)** (groundwater 207, surface water 133)
- **WATCH - Mandatory (627)** (groundwater 477, surface water 311)

Total number of community water systems affected: 931

Total number of active community water systems in Texas: 4721

*Resolved* A public water supply that has corrected production capacity deficiencies, or drought conditions for mandatory water use restrictions have all watered.

*Watch - Voluntary* A public water supply that has reported problems with high water usage and production, but has not suffered a loss of distribution system pressure. Voluntary water use restrictions have been implemented.

*Watch - Mandatory* A public water supply that has reported problems with high water usage and production, but has not suffered a loss of distribution system pressure. Mandatory water use restrictions have been implemented.

Number of systems on map may not represent total number of affected systems due to common water source or scale of map.



Texas  
Commission  
on Environmental  
Quality